


# Horizontal Duct Elbow Machine Technical Parameters



LANGKAH MAJU MESIN INDO



**LANGKAH MAJU MESIN INDO**

**Quality Assurance** 

**High Quality Materials** 

**High Temperature Quenching** 

**Quality Control Before Shipping** 

**CONTACT US**



# Horizontal Elbow Ducting Machine Introductions

## Performance Features



Horizontal Elbow Machine, also known as Round Tube Elbow Biting Machine, is a device for processing the butt joints on metal sheet round pipes and round tube elbows (shrimp bends). The pipe diameter range is 100-1000mm. The minimum diameter can be 100mm. It has good sealing and beautiful appearance. The machine has the advantages of reasonable structure, stable performance, high efficiency and convenient operation. The rolled bone has good straightness, accurate size and angle; the air duct after biting has good sealing and is firm and durable. Elbow Machine is mainly used to make elbows on adjustable HVAC.



Cutting



Jointing



Single-profile making



double-profile making



Profile locking



- The joint wheel has been fully quenched and heat treated, with a long service life and small deformation.
- It is driven by a full copper motor with low failure rate and low power consumption.
- The transmission gear is made of forged high carbon steel with high hardness and not easy to wear.
- The whole machine adopts the overall steel plate welding, which is thick and beautiful with good stability.
- The gear transmission ratio is optimized and the ribs are easy to press.
- Simple operation, no basic knowledge, one person can work independently.

Model	Sheet Thickness	Sheet Diameter	Power	Weight	Dimensions
LF-1.2X1000	1.2mm	Φ 120-1000mm	3 KW	460 KG	2220X920X1050mm



# Machine Details

## No.1

### Run Smoothly

Hardness box, Stable operation, Not easy to wear, can be customized according customer request.



## No.2

### Low Failure Rate

Fast speed, Good effect, High precision, Less post-maintenance, and large production.



## No.3

### Provide After Sales Service

We provide after-sales service for your machine problem, do not hesitate, feel free to contact us!





# No. 4

## Strict Factory Inspection

We do inspection at all levels before shipping to you and leaving factory, with excellent quality.

# No. 5

## Double Adjustment Wheel

The adjusting wheel adopts multi-stage transmission, which has small rotation, large displacement and higher production efficiency.



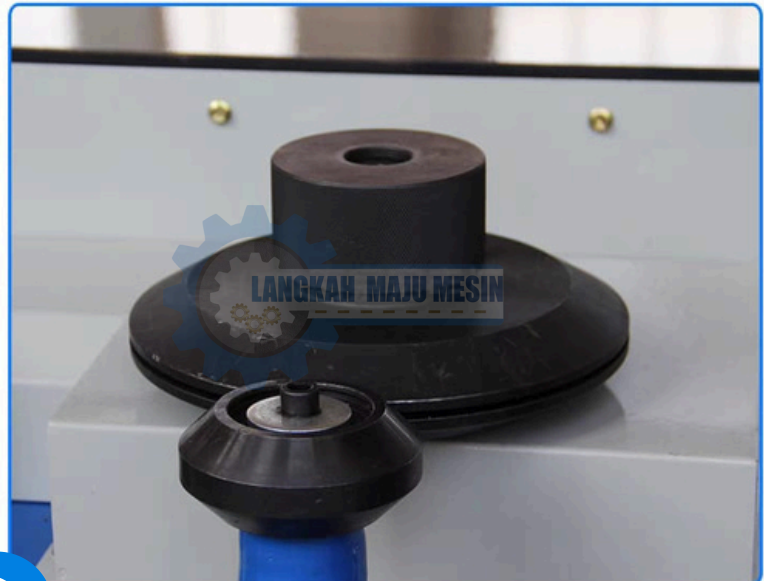
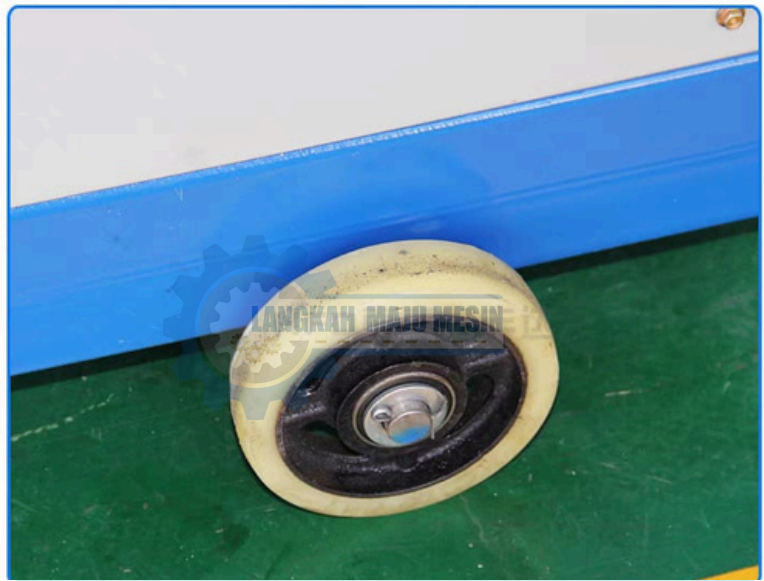
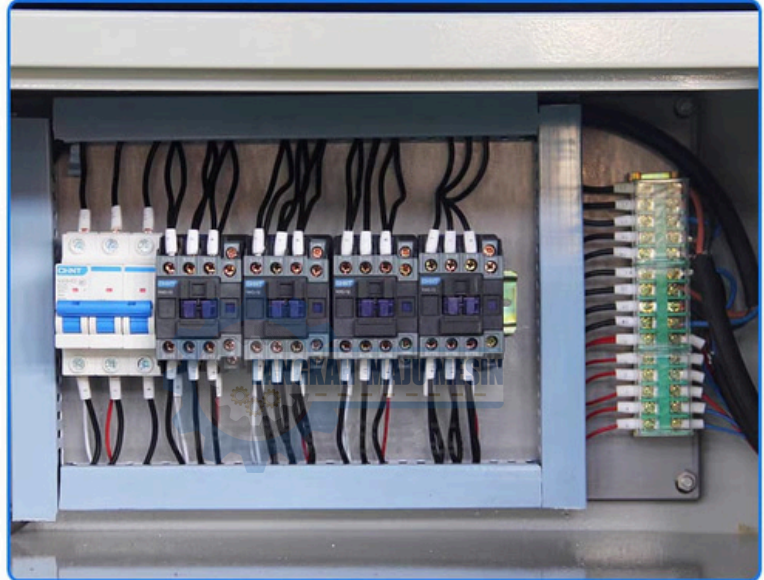
# No. 6

## Wear Resistant Gears

The output gear of the reducer and the roller gear are made of high-strength carbon tool steel, which is fully quenched and heat-treated, with high hardness and long service life



# MACHINE PHOTOS



CONTACT US

021-55913317 / 021-54332689

langkahmajumesinindo

www.langkahmajumesinindo.com

Pages : Langkah Maju Mesin Indo



@langkahmajumesin